

## The Sombrero : **Early-type galaxies?** **Late-type galaxies?**

Prominent disk and dust lane

High B/T, 0.73 ~ 0.925

Massive and bright,  $M_v \approx -22.4$

Red color,  $(B - V) \approx 1.0$

Many GCs,  $N = 1900 \pm 400$



## What makes **M104** an interesting target?

Nearby and isolated, not in groups or clusters

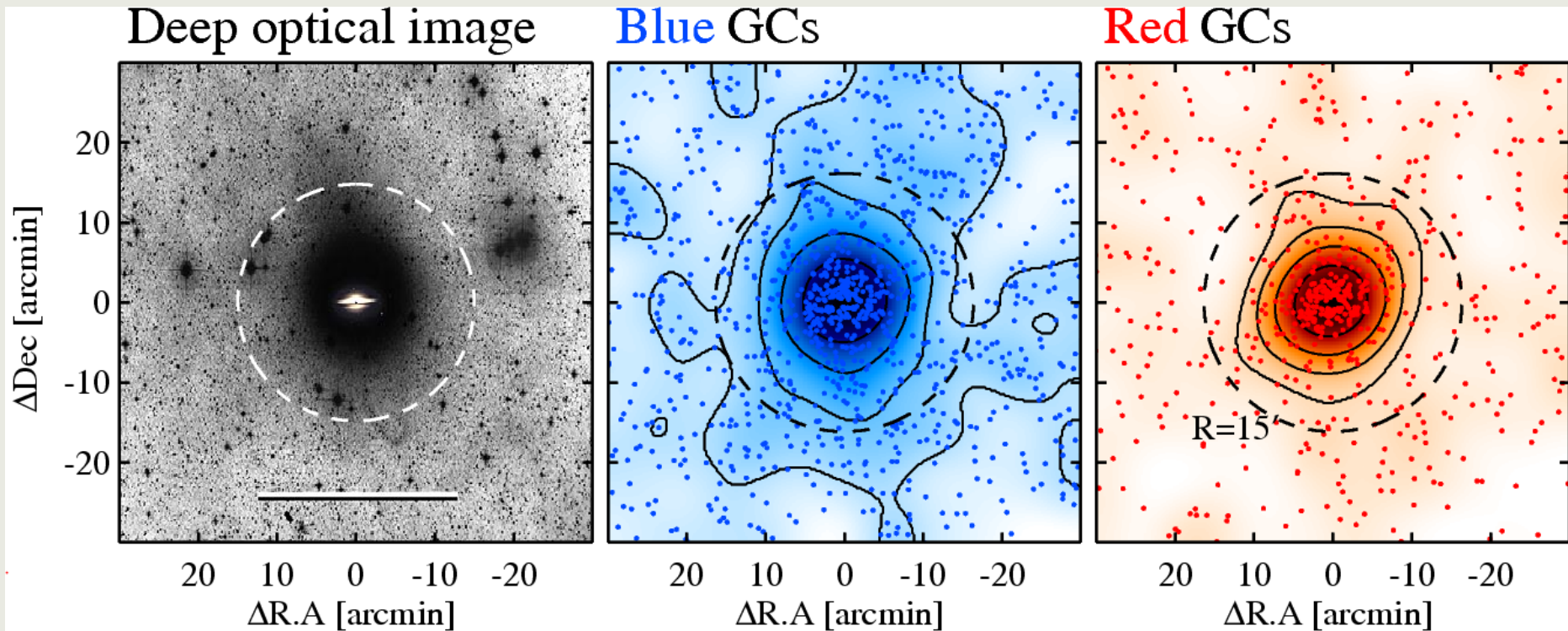
Controversial **morphological type (S0 / Sa)** & **bulge type (classical / pseudo)**

Expected to have **a giant metal-poor halo** as well as a metal-rich halo

# Tracing the Giant Outer Halo of an Intriguing Massive Galaxy M104 with GC systems

- Jisu Kang, Myung Gyoon Lee, and In Sung Jang

## Tracing the giant outer halo with GC systems



Deep and wide photometry with CFHT/MegaCam

Globular clusters : useful tracers of outer region for galaxies, clear bimodality

Existence of a giant metal-poor halo, comparison of blue GCs and red GCs