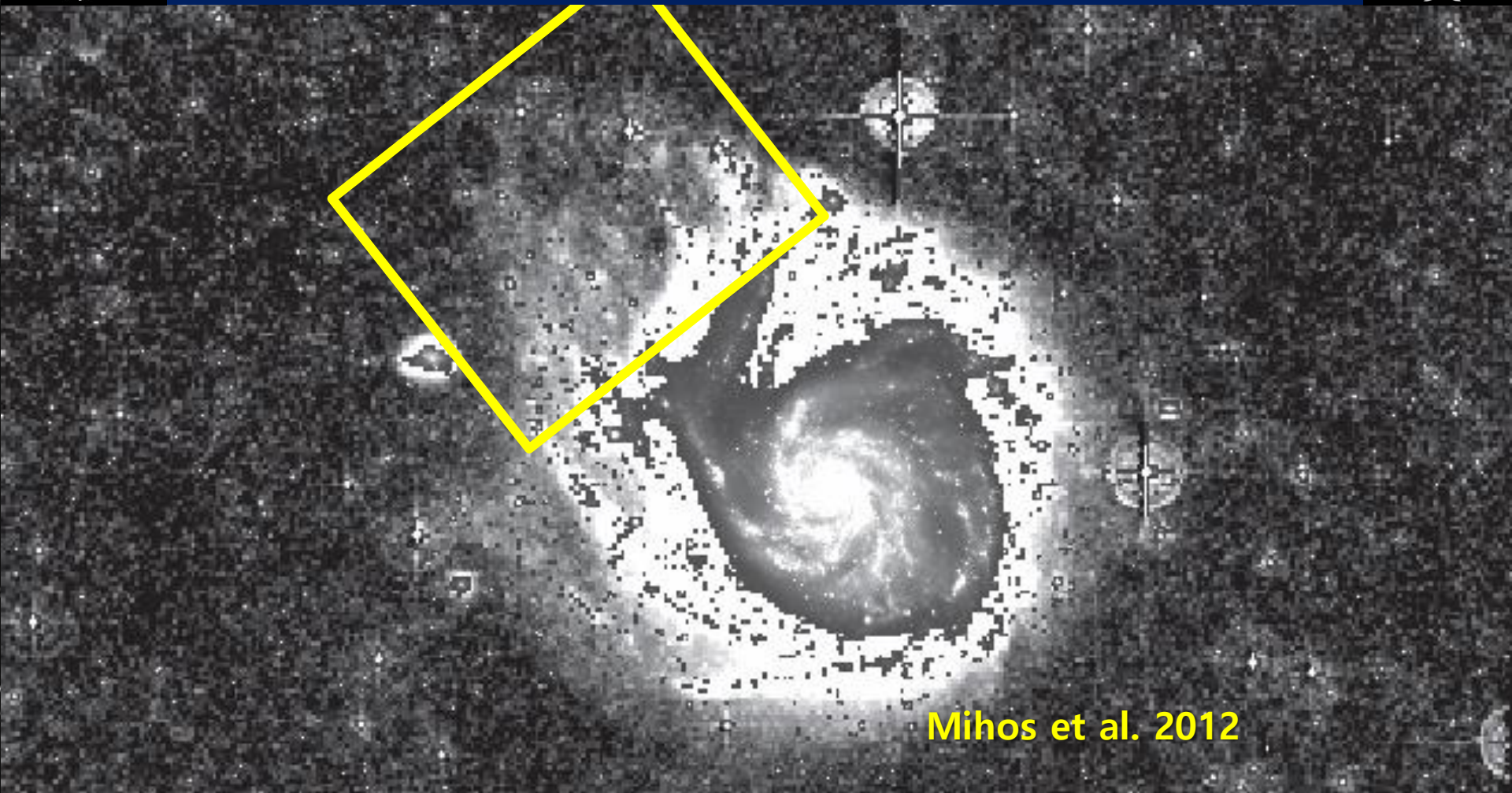


Contribution of Mergers on Star Formation in Nearby Late-Type Galaxies



Mihos et al. 2012

Maidanak Astronomical Observatory

Ulugh Beg Astronomical Institute (UBAI)
Uzbekistan Academy of Sciences



- **Intense Medium Survey of Nearby Galaxies**

- 120 galaxies for CCSNe monitoring since 2013
- Relatively high SFR ($\text{NUV} < -18$)
- Int. Time > 5400s (90min)

✓ **Contribution of Mergers on Galaxy Evolution**



Credit : <http://writing.galaxyzoo.org/>
A Little Star : Paper Mario Story