



Is an axizilla possible for di-photon resonance?



Jihn E. Kim^{a,b,*}

^a Department of Physics, Kyung Hee University, 26 Gynghedaero, Dongdaemun-Gu, Seoul 02447, Republic of Korea

^b Center for Axion and Precision Physics Research (IBS), 291 Daehakro, Yuseong-Gu, Daejeon 34141, Republic of Korea

ARTICLE INFO

Article history:

Received 29 December 2015
 Received in revised form 6 February 2016
 Accepted 9 February 2016
 Available online 11 February 2016
 Editor: M. Cvetič

Keywords:

Axizillas
 Di-photon
 TeV scale pseudoscalars
 Discrete symmetry
 Heavy quarks

ABSTRACT

Heavy axion-like particles, called axizillas, are simple extensions of the standard model (SM). An axizilla is required not to couple to the quarks, leptons, and Brout–Englert–Higgs doublets of the SM, but couple to the gauge anomalies of the W^\pm , Z and photon. It is possible to have its branching ratios (BRs) to two photons greater than 10% and to two Z 's less than 10%. To have a (production cross section) · (BR to di-photons) at a 10^{-38} cm² level, a TeV scale heavy quark Q is required for the gluon–quark fusion process. The decay of Q to axizilla plus quark, and the subsequent decay of the axizilla to two photons can be fitted at the required level of 10^{-38} cm².

© 2016 The Author. Published by Elsevier B.V. This is an open access article under the CC BY license (<http://creativecommons.org/licenses/by/4.0/>). Funded by SCOAP³.

1. Introduction

The recent report on possible di-photon events at 750 GeV from the LHC Run-II experiments [1–4] triggered a lot of theoretical interest on this issue. The requirement to explain the rate is to require the production rate, $\sigma_{\text{production}} \cdot (\text{branching ratio (BR) to di-photons})$, of order 10^{-38} cm² with the LHC parton distribution at 13 TeV energy. Any model for a diphoton resonance of mass 750 GeV decaying to two photons is better not to give such di-photons at the previous LHC Run-I at 8 TeV.

This invites to search for “Which particle is most economically introduced beyond the standard model (SM)?” A phenomenology on this is summarized in Ref. [4] and the recent papers are listed in [5,6]. Here, we search for a theory motivated particle. The well-known examples are axions [7], majorons [8], ALPs [9], and quintessential pseudoscalars or ultralight axions [10], which are much lighter than electron. We argue that not only these very light pseudoscalars but also TeV scale pseudoscalars are theoretically prospective. Since pseudoscalars are pseudo-Goldstone bosons of some spontaneously broken axial symmetry, we call these heavy pseudoscalars *axizillas*. In this paper, we investigate a possibility of an axizilla for the di-photon resonance of the LHC Run II.

It is known that string theory does not allow any global symmetry below the compactification scale, except the model-independent axion [11,12]. Also from the topological obstruction of global symmetries from gravity [13], it has been argued that a serious fine-tuning problem is present in axion physics [14]. In string compactification with the anomalous U(1) gauge symmetry, a global Peccei–Quinn (PQ) symmetry can survive down to an intermediate scale [15]. The resulting invisible axion is from a phase field of matter scalars instead from the anti-symmetric tensor field $B_{\mu\nu}$ [16]. Except from the anomalous U(1) gauge symmetry, any global symmetry must be approximate. For example, it has been shown numerically that there exist compactification models suppressing the explicit PQ symmetry breaking terms at some level [17]. Generically, however, any global symmetry in consideration must be broken at some leading scale below the compactification scale. Nevertheless some discrete symmetries can be allowed without the gravity obstruction problem [18].

In Fig. 1, we show the superpotential terms allowed by the discrete symmetry in the most left vertical column. If we consider a few lowest order terms, *i.e.* those inside the lavender square, there might appear a global symmetry. The terms allowed by this global symmetry are shown in the horizontal bar including those in the green box. Thus, this global symmetry is broken by the terms in the most left red boxes in the vertical column. In addition, we have shown also the non-Abelian anomaly terms which also break the global symmetry. If the PQ type global symmetry is respected by the superpotential, we neglect the most left column. In this case, the θ angle of the non-Abelian group vacuum chooses $\theta = 0$ as

* Corresponding author at: Department of Physics, Kyung Hee University, 26 Gynghedaero, Dongdaemun-Gu, Seoul 02447, Republic of Korea.

E-mail address: jihnekim@gmail.com.

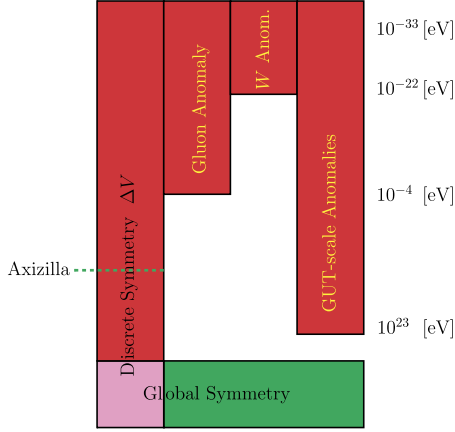


Fig. 1. A cartoon of classifying symmetries at low energy. The terms in the vertical column are allowed by discrete symmetries in string compactification. The terms in the superpotential belong to the most left column. The other three columns show anomalous terms. If one considers a few leading effective terms, i.e. corresponding to the lavender square, the terms there define an effective global symmetry. However, this global symmetry is broken by the terms in the red boxes. Some mass scales needed in cosmology are also shown with the axion mass scales [19–22]. (For interpretation of the references to color in this figure, the reader is referred to the web version of this article.)

the minimum, which is used in extremely light axions, quintessential axion [19], ultra light axion [20], QCD axion [21], and axionic inflation [22]. The respective axion mass scales are shown at the far right. On the left-hand side (LHS), the mass scale of axizilla is shown. The breaking scale is not known in any known non-Abelian gauge symmetry, and its mass derives from the global symmetry breaking potential, ΔV . Let the global symmetry be $U(1)_\Sigma$. Suppose S carries the discrete quantum number but is neutral under $U(1)_\Sigma$ and σ carries both the discrete and $U(1)_\Sigma$ quantum numbers,

$$S, \quad \text{with a GUT scale VEV } M_{\text{GUT}}, \text{ but not breaking } U(1)_{\text{global}},$$

$$\sigma, \quad \text{with a VEV } f/\sqrt{2}, \text{ breaking } U(1)_{\text{global}}. \quad (1)$$

For some discrete symmetry \mathbf{Z}_N , assign the global quantum numbers Σ as those of \mathbf{Z}_N with $-N < \Sigma < N$. For a discrete symmetry \mathbf{Z}_4 for example, let the discrete quantum numbers of σ be 1. Then, the following global symmetry breaking term, allowed by \mathbf{Z}_4 , as shown in Table 1 is present

$$\Delta V \sim \sigma^4 + \text{h.c.} \rightarrow f^4 \cos\left(4\frac{P}{f}\right)$$

where $|\sigma| = f/\sqrt{2}$. Without S fields, if f is of order TeV scale, which can be determined by the $U(1)_\Sigma$ preserving terms, then the pseudoscalar mass m_P is at the TeV scale. This is an axizilla. With S fields included, more complicated discrete symmetries can produce TeV scale axizillas. A cosmological effect of \mathbf{Z}_N symmetry is the appearance of domain walls [23] which however is difficult to be observed after inflation.

2. Axizillas with discrete symmetry \mathbf{Z}_N

With a discrete symmetry, we try to introduce a global anomaly but without a color anomaly. If it has a color anomaly, it is necessarily related to the QCD axion and the symmetry breaking scale must be larger than 10^{10} GeV. As the simplest example, let us introduce a vectorlike doublet with the hypercharge $Y = -\frac{1}{2}$,

$$\ell_L = \begin{pmatrix} N \\ L \end{pmatrix}_L, \quad \ell_R = \begin{pmatrix} N \\ L \end{pmatrix}_R. \quad (2)$$

Table 1

The $U(1)_\Sigma$ quantum numbers. ΔV can contain $\sigma^4(S^* + S^2)$.

	ℓ_L	ℓ_R	σ	S	E_L	E_R
\mathbf{Z}_{12}	$-\frac{1}{2}$	$+\frac{1}{2}$	1	+4	$+\frac{1}{2}$	$-\frac{1}{2}$
Σ	$-\frac{1}{2}$	$+\frac{1}{2}$	1	+4	$+\frac{1}{2}$	$-\frac{1}{2}$

In the SM, the pseudoscalar (P) coupling to color singlet gauge bosons are

$$\mathcal{L} = \frac{P}{f} \frac{g_2^2}{32\pi^2} W_{\mu\nu}^a \tilde{W}^{b\mu\nu} (\text{Tr } T_a T_b)$$

$$+ \frac{P}{f} \frac{g'^2}{32\pi^2} Y_{\mu\nu} \tilde{Y}^{\mu\nu} (\text{Tr } Y_L^2 + \text{Tr } Y_R^2) \quad (3)$$

where $W_{\mu\nu}^a$ is the non-Abelian field strength of $SU(2)$ gauge fields A_μ^a and $Y_{\mu\nu}$ is the field strength of $U(1)'$ gauge fields Y_μ . For a vectorlike fundamental representation in $SU(N)$, like a heavy quark axion model [21] or Eq. (2), $\text{Tr } T_a T_b = \frac{1}{2} \delta_{ab}$. Thus, Eq. (3) becomes

$$\mathcal{L} = \frac{P}{f} \frac{g_2^2}{32\pi^2} W_{\mu\nu}^a \tilde{W}^{a\mu\nu} + \frac{P}{f} \frac{g'^2}{32\pi^2} Y_{\mu\nu} \tilde{Y}^{\mu\nu}$$

$$= \frac{P}{32\pi^2 f} \left(2g_2^2 W_{\mu\nu}^+ \tilde{W}^{-\mu\nu} + 2e^2 F_{\mu\nu}^{\text{em}} \tilde{F}^{\text{em}\mu\nu} \right.$$

$$\left. + g_2^2 (1/c_W^2 - 2s_W^2) Z_{\mu\nu} \tilde{Z}^{\mu\nu} + 2\frac{eg_2}{c_W} F_{\mu\nu}^{\text{em}} \tilde{Z}^{\mu\nu} \right) \quad (4)$$

where

$$W_\mu^3 = \cos\theta_W Z_\mu + \sin\theta_W A_\mu,$$

$$Y_\mu = -\sin\theta_W Z_\mu + \cos\theta_W A_\mu,$$

$$c_W = \cos\theta_W = \frac{g_2}{\sqrt{g_2^2 + g'^2}},$$

$$s_W = \sin\theta_W = \frac{g'}{\sqrt{g_2^2 + g'^2}}. \quad (5)$$

The massless combination to the photon coupling is parametrized by $c_{P\gamma\gamma}$,

$$\mathcal{L}_{P\gamma\gamma} = \frac{c_{P\gamma\gamma} P}{f} \frac{e^2}{32\pi^2} F_{\mu\nu}^{\text{em}} \tilde{F}^{\text{em}\mu\nu} \quad (6)$$

where $c_{P\gamma\gamma}$ turns out to be 2 (see Table 1). Treating the W and Z bosons as massless, we estimate the branching ratios (BRs), to the decay modes to W^+W^- , 2γ , $2Z$, and $Z\gamma$ of Eq. (2), for which the BRs are shown in the first row of Table 2, where we used $\sin^2\theta_W \simeq 0.23$. The effect of \mathbf{Z}_N symmetry is to constrain possible interactions such that the leading term is suppressed by one power of f . Without the \mathbf{Z}_N symmetry, some terms in the potential dominate this anomaly term [14].

Let us now introduce n_1 pairs of $Q_{\text{em}} = -1$ vectorlike $SU(2)$ singlet E and n_2 pairs of (2),

$$n_2 \left\{ \ell_L = \begin{pmatrix} N \\ L \end{pmatrix}_L, \ell_R = \begin{pmatrix} N \\ L \end{pmatrix}_R \right\}, \quad n_1 \{E_L, E_R\}. \quad (7)$$

Now, we have

$$\mathcal{L}_{P\text{-decay}} = n_2 \frac{P}{f} \frac{g_2^2}{32\pi^2} W_{\mu\nu}^a \tilde{W}^{a\mu\nu} - (2n_1 - n_2) \frac{P}{f} \frac{g'^2}{32\pi^2} Y_{\mu\nu} \tilde{Y}^{\mu\nu}$$

$$= \frac{P}{32\pi^2 f} \left(g_2^2 2n_2 W_{\mu\nu}^+ \tilde{W}^{-\mu\nu} \right.$$

Table 2
Branching ratios of P .

n_2	n_1	W^+W^-	2γ	$2Z$	$Z\gamma$
1	0	0.73	0.005	0.10	0.17
1	5	0.58	0.25	~ 0	0.17
1	6	0.30	0.39	~ 0	0.31
2	4	0.58	0.03	0.07	0.32
2	5	0.81	0.10	0.08	0.01
2	6	0.72	0.15	0.06	0.07

$$\begin{aligned}
& -2g_2^2 s_W^2 (n_1 - n_2) F_{\mu\nu}^{\text{em}} \tilde{F}^{\text{em} \mu\nu} \\
& + \frac{g_2^2}{c_W^2} (n_2 - 2s_W^2 [n_1 s_W^2 + n_2 c_W^2]) Z_{\mu\nu} \tilde{Z}^{\mu\nu} \\
& + 2g_2^2 \frac{s_W}{c_W} [n_2 - 2n_1 s_W^2] F_{\mu\nu}^{\text{em}} \tilde{Z}^{\mu\nu}. \quad (8)
\end{aligned}$$

In Table 2, we present the BRs for several values of n_2 and n_1 . Note that the BR to two photons can be made significantly larger than the BR to $2Z$. For example, $n_2 = 2$ and $n_1 = 5$ give the LHC di-photons but two Z 's within the experimental error bound.

For the process, $q_i(p_1) + \bar{q}_j(p_2) \rightarrow W^\pm(k') + P(p')$ with the intermediate W^\mp , the cross section is estimated as

$$\begin{aligned}
\sigma &= \frac{1}{4\pi^2} \frac{1}{|\mathbf{v}_1 - \mathbf{v}_2|} \frac{1}{(2s_1 + 1)(2s_2 + 1)} \\
& \times \sum_{\text{spins}} \int \frac{d^3 k' d^3 p'}{2^4 E^2 E_k E_p} |T|^2 \delta^{(4)}(p_1 + p_2 - k' - P') \\
& \simeq \frac{\alpha_2^3}{512\pi} \frac{E_k^3 E_p}{f^2 E^4} \left[1 + \frac{E_k}{E_p} - \frac{m_p^2}{E_p^2} \right] \\
& \approx O(10^{-8}) \frac{1}{f^2} \approx O\left(10^{-41} \frac{1}{f_{\text{TeV}}^2}\right) \text{cm}^2. \quad (9)
\end{aligned}$$

Taking $f \approx 10\text{--}100$ TeV, the cross section is of order 10^{-44} cm² which is $O(10^{-6})$ too small, even before multiplying quark distribution functions, to interpret the LHC di-photons. If the gluon anomaly is introduced, then the production cross section is estimated to be $(\alpha_3/\alpha_2)^3$ multiplied to the result Eq. (9). This improves somewhat but the gluon distribution at $x \sim 0.03$ is so small that production by the intermediate gluon line is not enough. From the gluon anomaly term,

$$\mathcal{L}_{P\text{gg}} = \frac{c_{P\text{gg}} P}{f} \frac{g_3^2}{32\pi^2} G_{\mu\nu}^a \tilde{G}^{a\mu\nu}, \quad (10)$$

the decay rate is given by

$$\Gamma \approx 1.14 \times 10^{-3} \left(\frac{m_p}{0.75 \text{ TeV}}\right)^3 \frac{c_{P\text{gg}}^2}{f_{\text{TeV}}^2} \text{GeV}. \quad (11)$$

Then, the gluon fusion process gives the cross section

$$\begin{aligned}
A^2 \frac{1}{m_p \Gamma_p} &\approx 1.3 \times 10^{-5} \frac{c_{P\text{gg}}^2}{f^2} \frac{m_p}{\Gamma_p} \approx 5 \times 10^{-39} \frac{c_{P\text{gg}}^2}{f_{\text{TeV}}^2} \frac{m_p}{\Gamma_p} [\text{cm}^2] \\
&\approx 3.3 \times 10^{-33} \left(\frac{0.75 \text{ TeV}}{m_p}\right)^3 \frac{c_{P\text{gg}}^2}{f_{\text{TeV}}^2} [\text{cm}^2], \quad (12)
\end{aligned}$$

where Γ_p is the decay width of axizilla and $A^2 = c_{P\text{gg}}^2 \alpha_3^2 E^2 / 64\pi^2 f^2 \approx 1.3 \times 10^{-5} c_{P\text{gg}}^2 m_p^2 / f^2$. The gluon distribution function is of order $xg(x, Q^2) \approx 0.02$ at $x = 0.1 - 0.001$ at $Q^2 = 2 \text{ GeV}^2$ [25]. Using this number for both gluons at $x \simeq 0.01$, i.e. at 130 GeV,

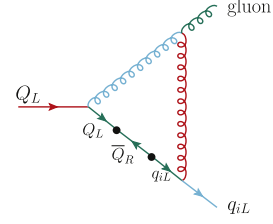


Fig. 2. The Feynman diagram for effective magnetic moment-type interaction, for production and decay of Q .

the energy is not enough to produce the resonance. However to have enough energy, one may take $x = O(0.1)$ at least for one gluon. In this region, the product of distribution functions is of order 4×10^{-4} . Multiplying this to (12), we obtain the P production cross section of order

$$\approx 1.3 \times 10^{-37} \left(\frac{0.75 \text{ TeV}}{m_p}\right)^3 \frac{c_{P\text{gg}}^2}{f_{\text{TeV}}^2} [\text{cm}^2]. \quad (13)$$

If P decays to two gluons, the BR to W^+W^- is of order 10% and the BR to 2γ is of order 1%. Thus, a rough estimate of $\sigma_{\text{production}} \cdot (\text{branching ratio (BR) to di-photons})$ is of order $10^{-39} [\text{cm}^2] / f_{\text{TeV}}^2$. Since f is expected to be of order $> O(10 \text{ TeV})$, two gluon fusion seems not enough for the di-photon resonance.

3. Heavy quarks at TeV scale

Maybe, a heavier particle might have been produced such that its decay products include P . Since the data is compatible with the di-photon resonance production with little kinetic energy [27], the mass of this heavier particle may not be much heavier than 1 TeV. Anticipating gluon–quark fusion process for the production of the heavier particle, let us introduce vectorlike heavy quark(s) Q 's. It must interact with gluon via the light quarks and the heavy quark(s) interaction

$$\mathcal{L} = h_i \bar{q}_{iL} Q_R H + h.c. \rightarrow h_i P \bar{q}_i \gamma_5 Q \quad (14)$$

where h_i is the Yukawa coupling to the i -th light-quark doublet and Q_R is an $SU(2)_W$ doublet, and H is an $SU(2)_W$ singlet.¹ Below a few TeV, the heavy component of H is integrated out, leading to P and Q at the TeV scale. The decay of Q is depicted in Fig. 2. Then, using Eq. (14), a magnetic moment type effective interaction is obtained,

$$\mathcal{L}_{Q\text{qg}} = \frac{c_i}{\Lambda} G^{a\mu\nu} \bar{q}_i \frac{[\gamma_\mu, \gamma_\nu]}{2} F_a Q \quad (15)$$

where F^a is the generator of $SU(3)_c$, $G^{a\mu\nu}$ is the field strength of gluon field G_μ^a and Λ is the effective mass scale. Due to the heavy quark coupling to H , the axizilla coupling to the gluon anomaly is present. The partial decay rate to q_i and gluon is given by

$$\Gamma_Q^{q_i} \simeq \left(\frac{2c_i m_Q}{\sqrt{\pi} \Lambda}\right)^2 m_Q. \quad (16)$$

The partial decay width due to (14) is

$$\Gamma(Q \rightarrow q_i + P) = \frac{h_i^2}{4\pi} m_Q \left(1 - \frac{M_p^2}{m_Q^2}\right). \quad (17)$$

¹ The singlet H should not be confused with the BEH doublet. To distinguish it from the singlet notations S , σ and σ' of Table 3 and Eq. (1), we use H as a singlet here since we need not introduce the notation of the BEH doublet in this paper. Q is a vectorlike $SU(2)_W$ doublet, like (2) with the additional degree of color.

Table 3

Quantum numbers of $U(1)_\Sigma$ and $U(1)_\Gamma$ from $\mathbf{Z}_{12} \times \mathbf{Z}_2$.

	ℓ_L	ℓ_R	σ	S	E_L	E_R	Q_{1L}	Q_{1R}	Q_{2L}	Q_{2R}	Q'_L	Q'_R	σ'
\mathbf{Z}_{12}	$-\frac{1}{2}$	$+\frac{1}{2}$	1	4	$+\frac{1}{2}$	$-\frac{1}{2}$	$+\frac{1}{2}$	$-\frac{1}{2}$	$-\frac{1}{2}$	$+\frac{1}{2}$	0	0	0
Σ	$-\frac{1}{2}$	$+\frac{1}{2}$	1	4	$+\frac{1}{2}$	$-\frac{1}{2}$	$+\frac{1}{2}$	$-\frac{1}{2}$	$-\frac{1}{2}$	$+\frac{1}{2}$	0	0	0
\mathbf{Z}_2	0	0	0	0	0	0	0	0	0	0	$+\frac{1}{2}$	$-\frac{1}{2}$	1
Γ	0	0	0	0	0	0	0	0	0	0	$+\frac{1}{2}$	$-\frac{1}{2}$	1

In some formulae below, to simplify the expression we assumed (17) is sub-dominant compared to (16).

Using Eq. (15), we have the $u(p)_L + \text{gluon}(k) \rightarrow u(p')_L + \text{gluon}(k')$ with an intermediate heavy quark $Q(Q)$, whose amplitude is proportional to

$$\bar{u}_L(p') \sigma^{\mu\nu} F^a G^a_{\mu\nu}(k') \frac{i}{Q - m_Q} F^b G^b_{\rho\sigma}(k) \sigma^{\rho\sigma} u_L(p) \quad (18)$$

where F^a is the generator of $SU(3)_c$, and $\sigma^{\mu\nu} = i[\gamma^\mu, \gamma^\nu]/2$. Note that the relevant light particles below a few TeV are heavy quarks and the axizilla P . The hypothetical global symmetry, called $U(1)_\Sigma$ is broken above a few TeV, and the scalar part of H is assumed to be heavier than a few TeV. So, if \mathcal{L}_{Qqg} in (15) is the only relevant interaction, the cross section is estimated as, for the head-on collisions in the proton + proton machine,

$$\sigma(x_1, x_2) \simeq \frac{3c_i^2}{2\Lambda^2} \frac{(m_{q_i}^2/E^2)}{\pi(x_1 + x_2) \left[(x_1 x_2 - \frac{m_Q^2}{4E^2})^2 + \frac{\Gamma^2}{4E^2} \right]} \times \ln \left(\frac{2}{1 - \cos \theta_{\min}} \right), \quad (19)$$

where E is the beam energy, *i.e.* 6.5 GeV at Run-II, m_{q_i} is the light quark mass of species q_i , x_1 is the scaling variable of the incoming quark and x_2 is the scaling variable of the incoming gluon.

We attempt to solve the strong CP problem by the invisible axion. Since Q carries color, we must worry about the QCD anomaly. So, if the QCD axion decay constant f_a is near the TeV scale then the model is ruled out from the SN1987A bound [28]. The gluon anomaly must be absent at the TeV scale. This can be achieved by two axions such that the gluon anomaly is carried away by the invisible axion at a high energy scale [7] and the 750 GeV resonance does not carry the gluon anomaly even though we introduced colored vectorlike doublets by Q . So, we introduced another heavy quark Q_2 in addition to Q_1 such that two global symmetries, the PQ symmetry $U(1)_\Gamma$ and the 750 GeV resonance-related symmetry $U(1)_\Sigma$, can be introduced. In Table 3, we presented this idea on the RHS of the double bar, where P is not coupling to the gluon anomaly and an invisible axion is introduced by the phase of σ' . For this to be an invisible axion, we forbid the terms of the form $(\sigma')^n$ for $n \leq 8$. A natural solution of this kind from superstring compactification is through the anomalous $U(1)$ [15], in which case $\Delta V = 0$, *i.e.* the most left red column of Fig. 1 is absent.² But, the model of Table 3 must introduce Dirac masses m_1 and m_2 at the TeV scale in $m_1 \bar{Q}_{2R} Q_{1L} + m_2 \bar{Q}_{1R} Q_{2L} + \text{h.c.}$ For the estimation of the cross section, we use the order given in Eq. (19).

The gluon distribution is given in Ref. [25] which is shown in Fig. 3. The thick red curve may be parametrized as

² The anomalous $U(1)$ from string compactification is a gauge symmetry, and hence there does not exist the wormhole problem [24]. The global symmetry below the anomalous $U(1)$ scale is an excellent PQ symmetry from string compactification [16].

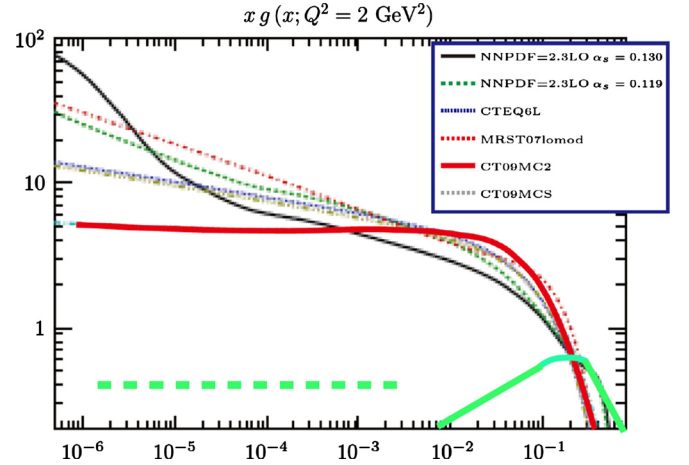


Fig. 3. The gluon distribution function for several models from Ref. [25]. For the thick red curve for example, it rises from 0 at $x \simeq 0.36$ to 5 at $x \simeq 10^{-2}$. For comparison, we show the valence u -quark structure function $xu_v(x)$ at $Q^2 = 1.9 \text{ GeV}^2$ with the thick green curve of DESJ from Fig. 18 of Ref. [26]. At low x , $xu(x)$ will be mostly sea quark distributions as sketched with the thick green dash line. (For interpretation of the references to color in this figure, the reader is referred to the web version of this article.)

$$G(x) \equiv xg(x) = \begin{cases} -2.7 \log \frac{x}{0.36} + \left(\log \frac{x}{0.36} \right)^2, & \text{for } 0.005 < x < 0.36, \\ 0, & \text{for } x > 0.36. \end{cases} \quad (20)$$

For the quark distribution, Ref. [26] from HERA data may be used. Including the sea quarks, the u -quark distribution (shown as the thick green curve and dash line) may be parametrized as

$$U(x) \equiv xu(x) = \begin{cases} 5.6(x - 0.5) + 0.4235, & \text{for } x < 0.05, \\ -10(x - 0.2)^2 + 0.03(x - 0.2) + 0.653, & \text{for } 0.05 < x < 0.2, \\ -\log \frac{x}{0.9}, & \text{for } 0.2 < x < 0.9, \\ 0, & \text{for } x > 0.9. \end{cases} \quad (21)$$

These will be used for a rough estimate of cross sections. The fusion condition is $x_1 x_2 = m_Q^2 / 4E^2$ which for $m_Q = 1 \text{ TeV}$ is ≈ 0.016 and 0.006, respectively, at Run-I and Run-II. Folding to the LHC quark and gluon distributions

$$\begin{aligned} \sigma_{\text{production}} &= \int \sigma(x_1, x_2) u(x_1) g(x_2) \delta(x_2 = m_Q^2 / 4E^2 x_1) dx_1 dx_2 \\ &= \frac{c_q^2}{\Lambda^2} \int_{x_1 \min}^{0.9} \sigma \left(x_1, \frac{m_Q^2 / 4E^2}{x_1} \right) u(x_1) g \left(\frac{m_Q^2 / 4E^2}{x_1} \right) dx_1 \\ &= \frac{c_i^2}{\Lambda^2} \frac{6m_{q_i}^2}{\pi \Gamma^2} \ln \left(\frac{2}{1 - \cos \theta_{\min}} \right) \end{aligned}$$

$$\begin{aligned} & \times \int_{x_1 \min}^{0.9} dx_1 \frac{U(x_1) G\left(\frac{m_Q^2/4E^2}{x_1}\right)}{x_1 + \frac{m_Q^2/4E^2}{x_1}} \\ & \simeq \frac{c_i^2}{\Lambda^2} \frac{6m_{q_i}^2}{\pi \Gamma^2} A_{Run}^i = \frac{1}{m_Q^2} \frac{m_{q_i}^2}{m_Q^2} \frac{3\Lambda^2}{2c_i^2 m_Q^2} A_{Run}^i, \end{aligned} \quad (22)$$

with $A_{Run}^u \simeq 9$ and 20 , with $A_{Run}^b \simeq 0.0215$ and 0.26 , (22)

respectively, for Run-I ($Run = I$) and Run-II ($Run = II$), because the rapidity cut at CMS was 2.5 , which corresponds to $\theta_{\min} = 9.38^\circ$. Thus, $\ln(2/(1 - \cos \theta_{\min})) \simeq 5$. For Run-I and Run-II, $x_1 \min \simeq 0.016, 0.006$, respectively, and

$$I_R = \int_{x_1 \min}^{0.9} dx_1 \frac{U(x_1) G\left(\frac{m_Q^2/4E^2}{x_1}\right)}{x_1 + \frac{m_Q^2/4E^2}{x_1}} \simeq 1.80 \text{ at Run-I,}$$

and 3.92 at Run-II,

$$I_R = \int_{x_1 \min}^{0.005} dx_1 \frac{U(x_1) G\left(\frac{m_Q^2/4E^2}{x_1}\right)}{x_1 + \frac{m_Q^2/4E^2}{x_1}} \simeq 0.0043 \text{ at Run-I,}$$

and 0.052 at Run-II, (23)

where $x_1 \min$ corresponds to the vanishing gluon distribution above $x_2 > 0.36$. For A_{Run}^i , the sea quark distribution, for example for the b -quark, we used only the dash line part with a guessed upper limit of $x_1 = 0.005$ of Fig. 3. For the t -quark sea, the upper bound may be too low to allow any significant number. Note that the expression (22) does not have $1/E^2$ dependence because of the transition magnetic moment type interaction (15). This feature is helpful in fitting Run-I and Run-II data simultaneously, because we do not have an extra factor $(13/8)^2 \simeq 2.64$ for predicting Run-I cross section after fitting to the Run-II data. For example, the CMS data [1,4] are (0.5 ± 0.6) fb at Run-I and (6 ± 3) fb at Run-II [4]. With the ratio $A_{R_I}^u/A_{R_{II}}^u = 0.45$ for the u -quark distribution, Run-I data is within 2σ level after fitting the Run-II data by Eq. (22). Now, $\sigma_{\text{production}}$ given in Eq. (22) crucially depends on the (parton) quark mass and the coupling c_i , viz $m_{q_i}^2/c_i^2$. With the ratio $A_{R_I}^b/A_{R_{II}}^b = 0.0043/0.052 = 0.08$ for the b -quark distribution, Run-I and Run-II data are simultaneously fitted by Eq. (22). So, with comparable couplings c_i , heavy sea quark contributions dominate. Neglecting the valence quark contributions, $\sigma_{\text{production}}$ is proportional to

$$\sum_i \frac{m_{q_i}^2}{c_i^2} \rightarrow \frac{m_b^2}{c_b^2}, \quad (24)$$

where in the last equation the sea bottom quarks are used. For $m_b = 4$ GeV, $m_Q = 1$ TeV

$$\sigma_{\text{production}} \approx 1.25 \times 10^{-40} \frac{\Lambda_{\text{TeV}}^2}{c_b^2} [\text{cm}^2]. \quad (25)$$

Thus, $\Lambda_{\text{TeV}}/|c_b| = O(50)$ will give a reasonable fit.

The Q decay BR to $q + P$ is similar to the Q decay BR to $q + \sigma$ because P is the phase field of σ . This branching ratio $B_P(Q \rightarrow q + P)$ depends on the details of the model. Assuming Eq. (16) is the leading decay, the probability producing one P from Q decay is 1. As an illustrative example, assume that $P \rightarrow 2\gamma$ decay is 10% without the gluon anomaly coupling. Then, the requirement of $\sigma_{\text{production}}$ (branching ratio (BR) to di-photons) at the level of 10^{-38} is achieved for $\Lambda_{\text{TeV}}/|c_b| = O(50)$. If Eq. (17) is dominant in the decay of Q , a different parameter set should be chosen.

4. Conclusion

Axizillas at TeV scale are prospective simple extensions of the SM. In this scheme, we showed that an axizilla produced through the decay of a TeV scale heavy quark can interpret the di-photon resonance hinted from the LHC Run-II data. In this analysis, we assumed the symmetry principle that P is a pseudo-Goldstone boson arising from breaking a global symmetry $U(1)_\Sigma$, and the TeV scale particles are heavy quarks Q and the axizilla P .

Acknowledgements

I would like to thank Bumseok Kyae, Hyun Min Lee and Unki Yang for useful discussions. This work is supported in part by the National Research Foundation of Korea (NRF) grant funded by the Korean Government (MEST) (NRF-2015R1D1A1A01058449) and by the IBS (IBS-R017-D1-2016-a00).

References

- [1] The ATLAS collaboration, ATLAS-CONF-2015-081; The CMS collaboration, CMS PAS EXO-15-004.
- [2] ATLAS and CMS physics results from Run-II, see, <http://indico.cern.ch/event/442432>.
- [3] D. Buttazzo, A. Greljo, D. Marzocca, arXiv:1512.04929 [hep-ph].
- [4] R. Franceschini, et al., arXiv:1512.04933 [hep-ph].
- [5] K. Das, S.K. Rai, The 750 GeV diphoton excess in a $U(1)$ hidden symmetry model, arXiv:1512.07789 [hep-ph].
- [6] Y. Mambri, G. Arcadi, A. Djouadi, The LHC diphoton resonance and dark matter, arXiv:1512.04913 [hep-ph]; Y. Nakai, R. Sato, K. Tobioka, Footprints of new strong dynamics via anomaly, arXiv:1512.04924 [hep-ph]; S. Di Chiara, L. Marzola, M. Raidal, First interpretation of the 750 GeV di-photon resonance at the LHC, arXiv:1512.04939 [hep-ph]; E. Molinaro, F. Sannino, N. Vignaroli, Minimal composite dynamics versus axion origin of the diphoton excess, arXiv:1512.05334 [hep-ph]; Q.H. Cao, Y. Liu, K.P. Xie, B. Yan, D.M. Zhang, A boost test of anomalous diphoton resonance at the LHC, arXiv:1512.05542; J. Chakraborty, A. Choudhury, P. Ghosh, S. Mondal, T. Srivastava, Di-photon resonance around 750 GeV: shedding light on the theory underneath, arXiv:1512.05767 [hep-ph]; C. Han, H.M. Lee, M. Park, V. Sanz, The diphoton resonance as a gravity mediator of dark matter, arXiv:1512.06376 [hep-ph]; J. de Blas, J. Santiago, R. Vega-Morales, New vector bosons and the diphoton excess, arXiv:1512.07229 [hep-ph]; P.S. Bhupal Dev, D. Teresi, Asymmetric dark matter in the Sun and the diphoton excess at the LHC, arXiv:1512.07243v2 [hep-ph].
- [7] J.E. Kim, G. Carosi, Axions and the strong CP problem, Rev. Mod. Phys. 82 (2010) 557, arXiv:0807.3125 [hep-ph]; J.E. Kim, Y.K. Semertzidis, S. Tsujikawa, Bosonic coherent motions in the Universe, Front. Phys. 2 (2015) 60, arXiv:1409.2497 [hep-ph].
- [8] Y. Chikashige, R.N. Mohapatra, R.D. Peccei, Are there real Goldstone bosons associated with broken lepton number?, Phys. Lett. B 98 (1981) 265, [http://dx.doi.org/10.1016/0370-2693\(81\)90011-3](http://dx.doi.org/10.1016/0370-2693(81)90011-3).
- [9] O.K. Baker, M. Betz, F. Caspers, J. Jaeckel, A. Lindner, A. Ringwald, Y. Semertzidis, P. Sikivie, K. Zioutas, Prospects for searching axion-like particle dark matter with dipole, toroidal and wiggler magnets, Phys. Rev. D 85 (2012) 035018, arXiv:1110.2180 [physics.ins-det].
- [10] J.E. Kim, H.P. Nilles, Dark energy from approximate $U(1)_{de}$ symmetry, Phys. Lett. B 730 (2014) 53, arXiv:1311.0012 [hep-ph]; J.E. Kim, Modeling small dark energy scale with quintessential pseudoscalar boson, J. Korean Phys. Soc. 64 (2014) 795, arXiv:1311.4545 [hep-ph]; M. Kamionkowski, J. Pradler, D.G.E. Walker, Dark energy from the string axiverse, Phys. Rev. Lett. 113 (2014) 251302, arXiv:1409.0549 [hep-ph].
- [11] E. Witten, Some properties of $O(32)$ superstrings, Phys. Lett. B 149 (1984) 351, [http://dx.doi.org/10.1016/0370-2693\(84\)90422-2](http://dx.doi.org/10.1016/0370-2693(84)90422-2); K. Choi, J.E. Kim, Harmful axions in superstring models, Phys. Lett. B 154 (1985) 393, [http://dx.doi.org/10.1016/0370-2693\(85\)90416-2](http://dx.doi.org/10.1016/0370-2693(85)90416-2).
- [12] X.G. Wen, E. Witten, World sheet instantons and the Peccei–Quinn symmetry, Phys. Lett. B 166 (1986) 397, [http://dx.doi.org/10.1016/0370-2693\(86\)91587-X](http://dx.doi.org/10.1016/0370-2693(86)91587-X).
- [13] S. Coleman, Why there is nothing rather than something: a theory of the cosmological constant, Nucl. Phys. B 310 (1988) 643, [http://dx.doi.org/10.1016/0550-3213\(88\)90097-1](http://dx.doi.org/10.1016/0550-3213(88)90097-1).
- [14] S.M. Barr, D. Seckel, Planck scale corrections to axion models, Phys. Rev. D 46 (1992) 539, <http://dx.doi.org/10.1103/PhysRevD.46.539>;

- M. Kamionkowski, J. March-Russell, Planck scale physics and the Peccei–Quinn mechanism, *Phys. Lett. B* 282 (1992) 137, arXiv:hep-th/9202003;
- R. Holman, S.D.H. Hsu, T.W. Kephart, E.W. Kolb, R. Watkins, L.M. Widrow, Solutions to the strong CP problem in a world with gravity, *Phys. Lett. B* 282 (1992) 132, arXiv:hep-ph/9203206;
- B.A. Dobrescu, The strong CP problem versus Planck scale physics, *Phys. Rev. D* 55 (1997) 5826, arXiv:hep-ph/9609221.
- [15] J.E. Kim, The strong CP problem in orbifold compactifications and an $SU(3) \times SU(2) \times U(1)^n$ model, *Phys. Lett. B* 207 (1988) 434, [http://dx.doi.org/10.1016/0370-2693\(88\)90678-8](http://dx.doi.org/10.1016/0370-2693(88)90678-8);
- J.E. Kim, Calculation of axion–photon–photon coupling in string theory, *Phys. Lett. B* 735 (2015) 95, arXiv:1405.6175 [hep-ph];
- J.E. Kim, *Phys. Lett. B* 741 (2014) 327, Corrigendum.
- [16] J.E. Kim, Natural Higgs-flavor-democracy solution of the μ problem of supersymmetry and the QCD axion, *Phys. Rev. Lett.* 111 (2013) 031801, arXiv:1303.1822 [hep-ph].
- [17] K.S. Choi, I.-W. Kim, J.E. Kim, String compactification, QCD axion and axion–photon–photon coupling, *J. High Energy Phys.* 0703 (2007) 116, arXiv:hep-ph/0612107.
- [18] L.M. Krauss, F. Wilczek, Discrete gauge symmetry in continuum theories, *Phys. Rev. Lett.* 62 (1989) 1221, <http://dx.doi.org/10.1103/PhysRevLett.62.1221>.
- [19] J.E. Kim, H.P. Nilles, A quintessential axion, *Phys. Lett. B* 553 (2003) 1, arXiv:hep-ph/0210402.
- [20] J.E. Kim, D.J.E. Marsh, An ultralight pseudoscalar boson, arXiv:1510.01701 [hep-ph].
- [21] J.E. Kim, Weak interaction singlet and strong CP invariance, *Phys. Rev. Lett.* 43 (1979) 103, <http://dx.doi.org/10.1103/PhysRevLett.43.103>.
- [22] J.E. Kim, H.P. Nilles, M. Peloso, Completing natural inflation, *J. Cosmol. Astropart. Phys.* 0501 (2005) 005, arXiv:hep-ph/0409138.
- [23] Ya.B. Zeldovich, I.Yu. Kobzarev, L.B. Okun, Cosmological consequences of the spontaneous breakdown of discrete symmetry, *Zh. Eksp. Teor. Fiz.* 67 (1974) 3, *Sov. Phys. JETP* 40 (1974) 1.
- [24] J.E. Kim, Abelian discrete symmetries Z_N and Z_{nR} from string orbifolds, *Phys. Lett. B* 726 (2013) 450, arXiv:1308.0344 [hep-th].
- [25] P. Skands, S. Carrazza, J. Rojo, Tuning PYTHIA 8.1: the Monash 2013 Tune, arXiv:1404.5630 [hep-ph].
- [26] F.D. Aaron, et al., H1 Collaboration, ZEUS Collaboration, Combined measurement and QCD analysis of the inclusive e^+p scattering cross sections at HERA, *J. High Energy Phys.* 1001 (2010) 109, arXiv:0911.0884 [hep-ex].
- [27] U. Yang, Private conversation, December 2015.
- [28] M.S. Turner, Windows on the axion, *Phys. Rep.* 197 (1990) 67, [http://dx.doi.org/10.1016/0370-1573\(90\)90172-X](http://dx.doi.org/10.1016/0370-1573(90)90172-X);
- G.G. Raffelt, Astrophysical methods to constrain axions and other novel particle phenomena, *Phys. Rep.* 198 (1990) 1, [http://dx.doi.org/10.1016/0370-1573\(90\)90054-6](http://dx.doi.org/10.1016/0370-1573(90)90054-6).